

WELL-THOUGHT-OUT SET OF ACCESSORIES



- 1. Flashlight
- 2. 18650 Li-Ion battery 3500 mAh
- 3. Remote switch
- 4. 2 holders for mounting the remote switch on a Picatinny/Weaver rail
- 5. Velcro mounting tape for remote switch
- 6. Cover plate of the remote switch connector
- 7. 3 spare screws for installation of the remote switch
- 8. 2 zip ties
- 9. 1.5 mm hex wrench
- 10. Spare O-ring
- 11. User manual in eight languages

SPECIFICATIONS

		Parma C2IR Pro
Optics		Smooth reflector
Light output		1250 lm
Beam distance		320 m
Hotspot : Spill		5.5°:62°
IR light power		1.6 W
IR light wavelength		940 nm
Brightness stabilization type		Full
Modes / Runtimes	Main	1250 lm / 1 h 50 min (600 lm after 1 min)
	Strobe	1250 lm / 15 Hz / 2 h 40 min (600 lm after 2 min)
	IR light	1.6 W / 2 h
Power source		1x18650 Li-Ion, 2xCR123A
Length / width / height		147 mm / 43.3 mm / 41.3 mm
Weight without / with battery		130.5 g / 179.5 g
Ingress protection, Submersion and Impact resistance		IP68. Depth up to 2 m for 5 h. IP67 when remote switch is installed. Height up to 10 m
Set description		Flashlight, 18650 Li-Ion battery 3500mAh, remote switch, 2 holders for mounting the remote switch on a Picatinny/Weaver rail, Velcro mounting tape for remote switch, cover plate of the remote switch connector, 3 spare screws for installation of the remote switch, 2 zip ties, 1.5 mm hex wrench, spare O-ring, user manual in eight languages

▶ All the above specifications are test results based on ANSI/PLATO FL-1-2019 Standard using the battery in the set. The data may vary due to environment, heat dissipation and other factors.

WELL-THOUGHT-OUT SET OF ACCESSORIES



- 1. Flashlight
- 2. 18650 Li-Ion battery 3500 mAh
- 3. Remote switch
- 4. 2 holders for mounting the remote switch on a Picatinny/Weaver rail
- 5. Velcro mounting tape for remote switch
- 6. Cover plate of the remote switch connector
- 7. 3 spare screws for installation of the remote switch
- 8. 2 zip ties
- 9. 1.5 mm hex wrench
- 10. Spare O-ring
- 11. User manual in eight languages

SPECIFICATIONS

		Parma C2 Pro
Optics		Smooth reflector
Light output		1500 lm
Beam distance		350 m
Hotspot : Spill		5.5°:62°
Brightness stabilization type		Full
Modes / Runtimes	Turbo	1500 lm / 1 h 45 min (800 lm after 1 min)
	Main	200 lm / 6 h 30 min
	Strobe	1500 lm / 15 Hz / 3 h (700 lm after 3 min)
Power source		1x18650 Li-Ion, 2xCR123A
Length / width / height		147 mm / 43.3 mm / 41.3 mm
Weight without / with battery		130.5 g / 179.5 g
Ingress protection, Submersion and Impact resistance		IP68. Depth up to 2 m for 5 h. IP67 when remote switch is installed. Height up to 10 m
Set description		Flashlight, 18650 Li-Ion battery 3500mAh, remote switch, 2 holders for mounting the remote switch on a Picatinny/Weaver rail, Velcro mounting tape for remote switch, cover plate of the remote switch connector, 3 spare screws for installation of the remote switch, 2 zip ties, 1.5 mm hex wrench, spare O-ring, user manual in eight languages

▶ All the above specifications are test results based on ANSI/PLATO FL 1-2019 Standard using the battery in the set. The data may vary due to environment, heat dissipation and other factors.

WELL-THOUGHT-OUT SET OF ACCESSORIES



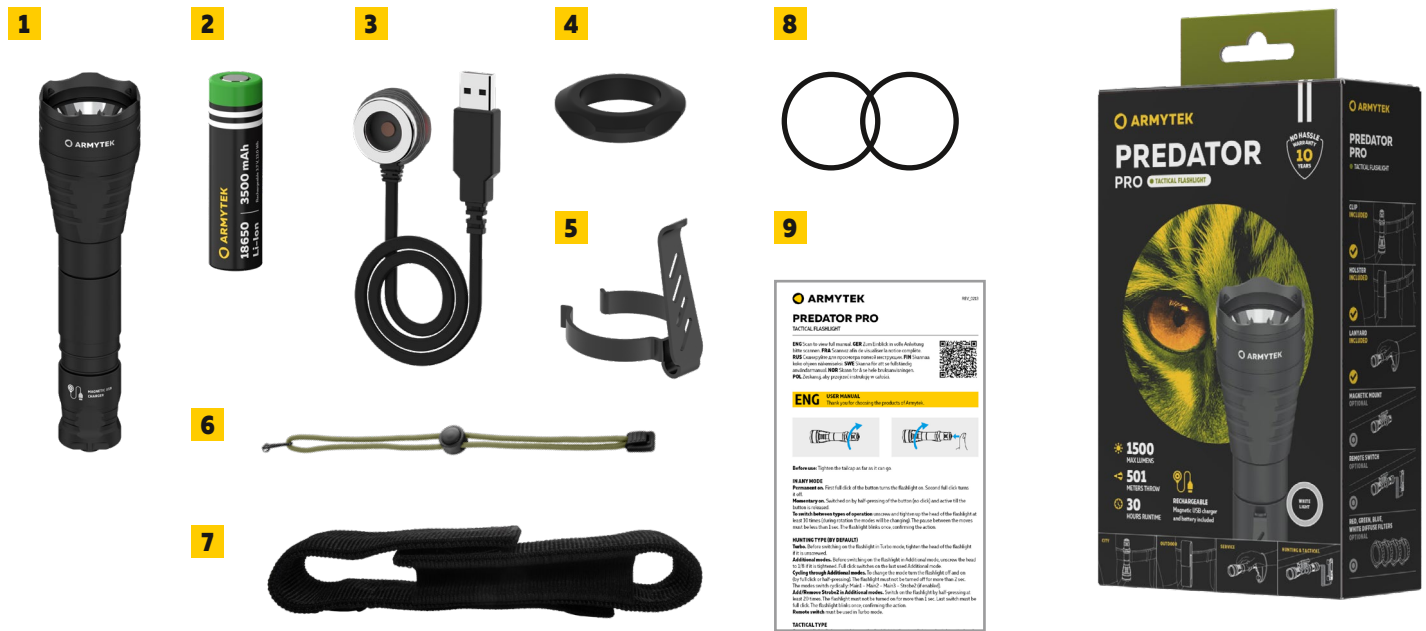
- 1. Flashlight
- 2. Magnetic USB charger
- 3. GL adapter
- 4. Picatinny adapter
- 5. 1.5 mm hex wrench
- 6. Spare screw
- 7. User manual in eight languages
- 8. Suspension with metal carabiner

SPECIFICATIONS

		Buckler M1
Optics		Smooth reflector
Light output		700 lm
Beam distance		105 m
Hotspot : Spill		13°:77°
Brightness stabilization type		Digital
Modes / Runtimes	Main2	700 lm / 1 h (150 lm after 1 min)
	Main1	150 lm / 1 h 5 min
	Strobe	700 lm / 15 Hz / 2 h (150 lm after 1 min)
Power source (built-in)		Li-Pol 350 mAh
Length / width / height		51.6 mm / 33.7 mm / 35.7 mm
Weight		58 g
Ingress protection, Submersion and Impact resistance		IP67. Depth up to 1 m for 30 min. Height up to 2 m
Set description		Flashlight, magnetic USB charger, GL adapter, Picatinny adapter, 1.5 mm hex wrench, spare screw, user manual in eight languages, suspension with metal carabiner

► All the above specifications are test results based on ANSI/PLATO FL 1-2019 Standard using the battery in the set. The data may vary due to environment, heat dissipation and other factors.

WELL-THOUGHT-OUT SET OF ACCESSORIES



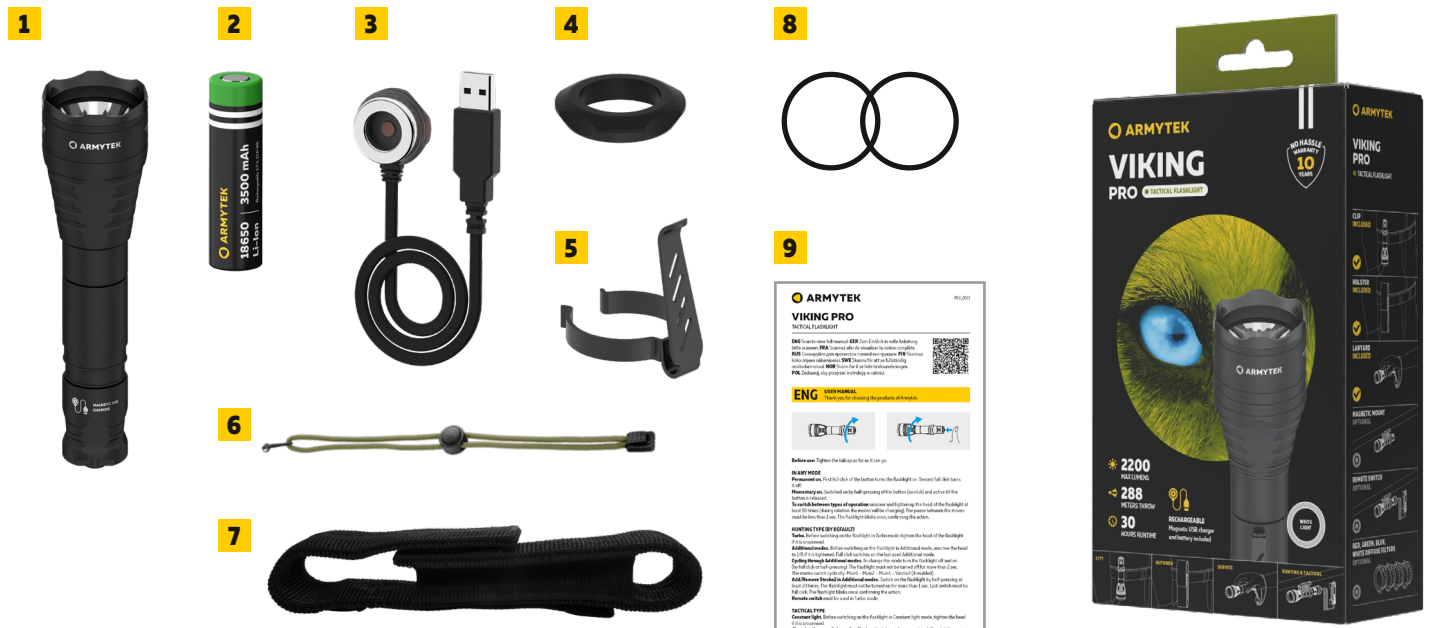
- 1. Flashlight
- 2. 18650 Li-Ion battery 3500 mAh
- 3. Magnetic USB charger
- 4. Silicone grip
- 5. Steel clip
- 6. Wrist lanyard
- 7. Nylon holster
- 8. 2 spare O-rings
- 9. User manual in eight languages

SPECIFICATIONS

		Predator Pro
Optics		Smooth reflector
Light output		1500 lm
Beam distance		501 m
Hotspot : Spill		5°:40°
Brightness stabilization type		Full
Number of modes		6
Modes / Runtimes	Turbo	1500 lm / 1 h 33 min (700 lm after 3 min)
	Main3	300 lm / 5 h 13 min
	Main2	120 lm / 12 h 20 min
	Main1	40 lm / 32 h
	Strobe2	1500 lm / 15 Hz / 3 h (700 lm after 3 min)
	Strobe1	120 lm / 15 Hz / 23 h
Power source		1x18650 Li-Ion
Length / head diameter / body diameter		160 mm / 41 mm / 25.4 mm
Weight without / with battery		136 g / 186 g
Ingress protection, Submersion and Impact resistance		IP68. Depth up to 25 m for 5 h. Height up to 25 m
Set description		Flashlight, 18650 Li-Ion battery 3500mAh, magnetic USB charger, clip, lanyard, holster, silicone grip, 2 spare O-rings, user manual

► All the above specifications are test results based on ANSI/PLATO FL 1-2019 Standard using the battery in the set. The data may vary due to environment, heat dissipation and other factors.

WELL-THOUGHT-OUT SET OF ACCESSORIES



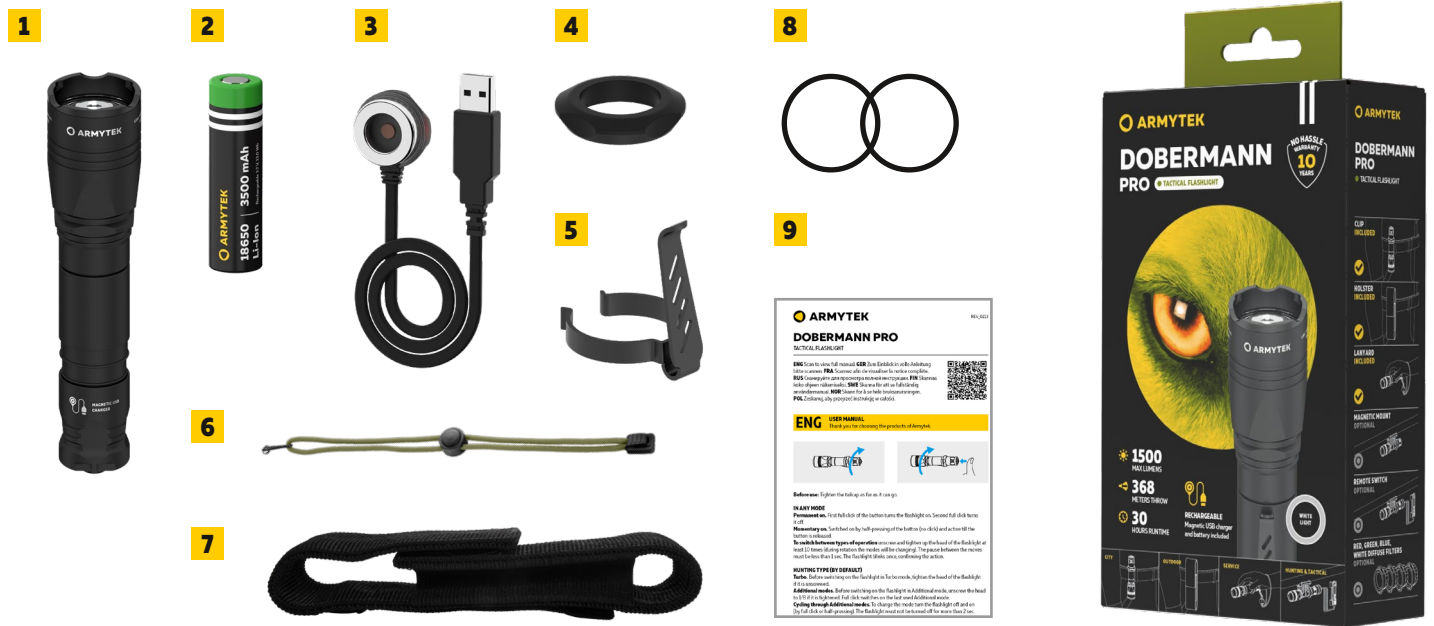
- 1. Flashlight
- 2. 18650 Li-Ion battery 3500 mAh
- 3. Magnetic USB charger
- 4. Silicone grip
- 5. Steel clip
- 6. Wrist lanyard
- 7. Nylon holster
- 8. 2 spare O-rings
- 9. User manual in eight languages

SPECIFICATIONS

		Viking Pro
Optics		Textured reflector
Light output		2200 lm
Beam distance		288 m
Hotspot : Spill		11°:40°
Brightness stabilization type		Full
Number of modes		6
Modes / Runtimes	Turbo	2200 lm / 1 h 33 min (940 lm after 3 min)
	Main3	400 lm / 5 h 13 min
	Main2	150 lm / 12 h 20 min
	Main1	56 lm / 32 h
	Strobe2	2200 lm / 15 Hz / 3 h (940 lm after 3 min)
	Strobe1	150 lm / 15 Hz / 23 h
Power source		1x18650 Li-Ion
Length / head diameter / body diameter		160 mm / 41 mm / 25.4 mm
Weight without / with battery		135 g / 185 g
Ingress protection, Submersion and Impact resistance		IP68. Depth up to 25 m for 5 h. Height up to 25 m
Set description		Flashlight, 18650 Li-Ion battery 3500mAh, magnetic USB charger, clip, lanyard, holster, silicone grip, 2 spare O-rings, user manual

▶ All the above specifications are test results based on ANSI/PLATO FL 1-2019 Standard using the battery in the set. The data may vary due to environment, heat dissipation and other factors.

WELL-THOUGHT-OUT SET OF ACCESSORIES



- 1. Flashlight
- 2. 18650 Li-Ion battery 3500 mAh
- 3. Magnetic USB charger
- 4. Silicone grip
- 5. Steel clip
- 6. Wrist lanyard
- 7. Nylon holster
- 8. 2 spare O-rings
- 9. User manual in eight languages

SPECIFICATIONS

		Dobermann Pro
Optics		Smooth reflector
Light output		1500 lm
Beam distance		368 m
Hotspot : Spill		6°:40°
Brightness stabilization type		Full
Number of modes		6
Modes / Runtimes	Turbo Main3 Main2 Main1 Strobe2 Strobe1	1500 lm / 1 h 33 min (710 lm after 3 min) 300 lm / 5 h 13 min 120 lm / 12 h 20 min 40 lm / 32 h 1500 lm / 15 Hz / 3 h (710 lm after 3 min) 120 lm / 15 Hz / 23 h
Power source		1x18650 Li-Ion
Length / head diameter / body diameter		150 mm / 33.5 mm / 25.4 mm
Weight without / with battery		114 g / 164 g
Ingress protection, Submersion and Impact resistance		IP68. Depth up to 25 m for 5 h. Height up to 25 m
Set description		Flashlight, 18650 Li-Ion battery 3500mAh, magnetic USB charger, clip, lanyard, holster, silicone grip, 2 spare O-rings, user manual

► All the above specifications are test results based on ANSI/PLATO FL 1-2019 Standard using the battery in the set. The data may vary due to environment, heat dissipation and other factors.

WELL-THOUGHT-OUT SET OF ACCESSORIES



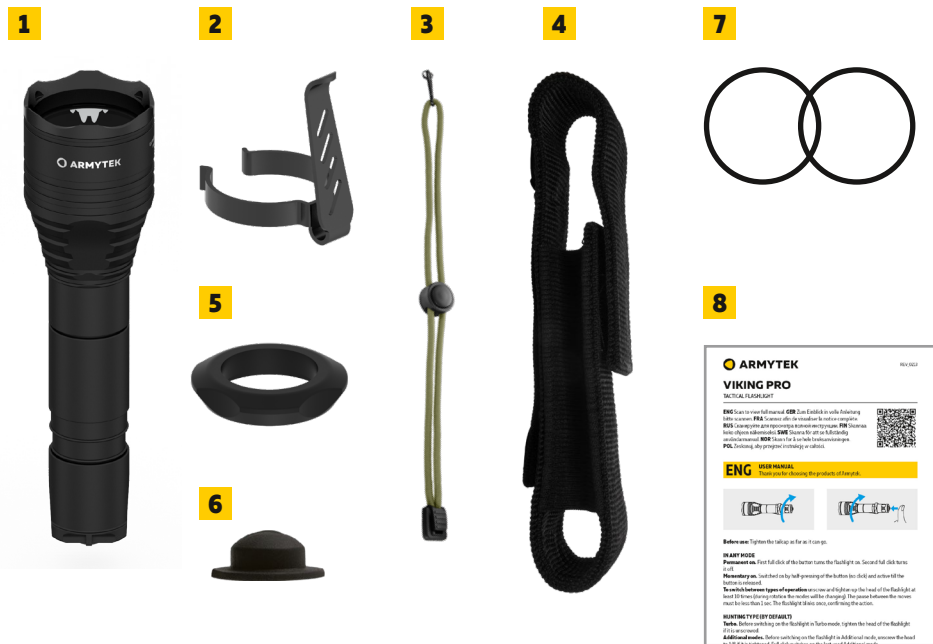
- 1. Flashlight
- 2. Steel clip
- 3. Wrist lanyard
- 4. Nylon holster
- 5. Silicone grip
- 6. Spare silicone button
- 7. 2 spare O-rings
- 8. User manual in eight languages

SPECIFICATIONS

		Predator
Optics		Smooth reflector
Light output		1000 lm
Beam distance		437 m
Brightness stabilization type		Digital
Number of modes		6
Modes / Runtimes	Turbo	1000 lm / 1 h 30 min
	Main3	370 lm / 3 h 48 min
	Main2	170 lm / 9 h
	Main1	28 lm / 48 h
	Firefly	1.7 lm / 18 days
	Strobe	1000 lm / 15 Hz / 3 h
Power source		1x18650 Li-Ion
Length / head diameter / body diameter		154 mm / 41 mm / 25.4 mm
Weight without / with battery		129 g / 179 g
Ingress protection, Submersion and Impact resistance		IP68. Depth up to 25 m for 5 h. Height up to 25 m
Set description		Flashlight, clip, lanyard, holster, silicone grip, spare silicone button, 2 spare O-rings, user manual

▶ All the above specifications are test results based on ANSI/PLATO FL 1-2019 Standard using 18650 Li-Ion 3400 mAh battery. The data may vary due to environment, heat dissipation and other factors.

WELL-THOUGHT-OUT SET OF ACCESSORIES



- 1. Flashlight
- 2. Steel clip
- 3. Wrist lanyard
- 4. Nylon holster
- 5. Silicone grip
- 6. Spare silicone button
- 7. 2 spare O-rings
- 8. User manual in eight languages

SPECIFICATIONS

		Viking
Optics		Smooth reflector
Light output		1050 lm
Beam distance		366 m
Brightness stabilization type		Digital
Number of modes		6
Modes / Runtimes	Turbo	1050 lm / 1 h 30 min
	Main3	410 lm / 3 h 48 min
	Main2	190 lm / 9 h
	Main1	32 lm / 48 h
	Firefly	2.5 lm / 18 days
	Strobe	1050 lm / 15 Hz / 3 h
Power source		1x18650 Li-Ion
Length / head diameter / body diameter		154 mm / 41 mm / 25.4 mm
Weight without / with battery		129 g / 179 g
Ingress protection, Submersion and Impact resistance		IP68. Depth up to 25 m for 5 h. Height up to 25 m
Set description		Flashlight, clip, lanyard, holster, silicone grip, spare silicone button, 2 spare O-rings, user manual

▶ All the above specifications are test results based on ANSI/PLATO FL 1-2019 Standard using 18650 Li-Ion 3400 mAh battery. The data may vary due to environment, heat dissipation and other factors.

WELL-THOUGHT-OUT SET OF ACCESSORIES



- 1. Flashlight
- 2. Steel clip
- 3. Wrist lanyard

- 4. Nylon holster
- 5. Silicone grip
- 6. Spare silicone button

- 7. 2 spare O-rings
- 8. User manual in eight languages

SPECIFICATIONS

	Dobermann												
Optics	Smooth reflector												
Light output	1000 lm												
Beam distance	381 m												
Brightness stabilization type	Digital												
Number of modes	6												
Modes / Runtimes	<table style="width: 100%; border: none;"> <tr> <td style="width: 20%;">Turbo</td> <td>1000 lm / 1 h 30 min</td> </tr> <tr> <td>Main3</td> <td>370 lm / 3 h 48 min</td> </tr> <tr> <td>Main2</td> <td>170 lm / 9 h</td> </tr> <tr> <td>Main1</td> <td>28 lm / 48 h</td> </tr> <tr> <td>Firefly</td> <td>1.7 lm / 18 days</td> </tr> <tr> <td>Strobe</td> <td>1000 lm / 15 Hz / 3 h</td> </tr> </table>	Turbo	1000 lm / 1 h 30 min	Main3	370 lm / 3 h 48 min	Main2	170 lm / 9 h	Main1	28 lm / 48 h	Firefly	1.7 lm / 18 days	Strobe	1000 lm / 15 Hz / 3 h
Turbo	1000 lm / 1 h 30 min												
Main3	370 lm / 3 h 48 min												
Main2	170 lm / 9 h												
Main1	28 lm / 48 h												
Firefly	1.7 lm / 18 days												
Strobe	1000 lm / 15 Hz / 3 h												
Power source	1x18650 Li-Ion												
Length / head diameter / body diameter	144 mm / 33.5 mm / 25.4 mm												
Weight without / with battery	110 g / 160 g												
Ingress protection, Submersion and Impact resistance	IP68. Depth up to 25 m for 5 h. Height up to 25 m												
Set description	Flashlight, clip, lanyard, holster, silicone grip, spare silicone button, 2 spare O-rings, user manual												

▶ All the above specifications are test results based on ANSI/PLATO FL 1-2019 Standard using 18650 Li-Ion 3400 mAh battery. The data may vary due to environment, heat dissipation and other factors.

WELL-THOUGHT-OUT SET OF ACCESSORIES



- 1. Flashlight
- 2. Body 1x18650
- 3. Steel clip
- 4. Wrist lanyard

- 5. Nylon holster
- 6. Silicone grip
- 7. Spare silicone button

- 8. 2 spare O-rings
- 9. User manual
- 10. Plastic case

SPECIFICATIONS

		Barracuda Pro
Optics		Smooth reflector
Light output		1500 lm
Beam distance		800 m
Brightness stabilization type		Full
Number of modes		9
Modes / Runtimes	Turbo2	1500 lm / 1 h
	Turbo1	800 lm / 2 h 48 min
	Main3	350 lm / 8 h
	Main2	150 lm / 22 h
	Main1	30 lm / 4.2 days
	Firefly2	1.7 lm / 85 days
	Firefly1	0.15 lm / 500 days
	Strobe2	1500 lm / 15 Hz / 2 h
	Strobe1	150 lm / 15 Hz / 44 h
Power source		2x18650 Li-Ion, 1x18650 Li-Ion
Length / head diameter / body diameter		244.6 mm / 64 mm / 25.4 mm
Weight without / with battery		259 g / 359 g
Ingress protection, Submersion and Impact resistance		IP68. Depth up to 10 m for 5 h. Height up to 25 m
Set description		Flashlight, body 1x18650, clip, lanyard, holster, silicone grip, spare silicone button, 2 spare O-rings, user manual, plastic case

► All the above specifications are test results based on ANSI/PLATO FL 1-2019 Standard. The data may vary due to environment, heat dissipation and other factors.

WELL-THOUGHT-OUT SET OF ACCESSORIES



- 1. Flashlight
- 2. 21700 Li-Ion battery 5000 mAh
- 3. Magnetic USB charger
- 4. 18650 battery adapter
- 5. Wrist lanyard
- 6. Nylon holster
- 7. 2 spare O-rings
- 8. User manual in eight languages

SPECIFICATIONS

		Prime C2 Pro Max
Optics		Smooth reflector
Light output		4000 lm
Beam distance		260 m
Hotspot : Spill		12° : 72°
Brightness stabilization type		Full
Number of modes		6 simple operation by default / 10 advanced operation
Modes / Runtimes	Turbo2 Turbo1 Main3 Main2 Main1 Firefly2 Firefly1 Strobe3 Strobe2 Strobe1	4000 lm / 3 h 4 min (900 lm after 2 min) 1300 lm / 3 h (900 lm after 37 min) 450 lm / 6 h 25 min 150 lm / 21 h 45 lm / 64 h 7 lm / 10 d 0.4 lm / 64 d 4000 lm / 10 Hz / 6 h 42 min (900 lm after 4 min) 4000 lm / 1 Hz / 12 h 30 min (900 lm after 25 min) 150 lm / 1 Hz / 90 h
Power source		1x21700 Li-Ion, 1x18650 Li-Ion
Length / head diameter / body diameter		133 mm / 41 mm / 25.4 mm
Weight without / with battery		133 g / 203 g
Ingress protection, Submersion and Impact resistance		IP68. Depth up to 10 m for 5 h. Height up to 10 m
Set description		Flashlight, 21700 Li-Ion battery 5000 mAh, magnetic USB charger, 18650 battery adapter, Wrist lanyard, nylon holster, 2 spare O-rings, user manual in eight languages

► All the above specifications are test results based on ANSI/PLATO FL 1-2019 Standard using the battery in the set. The data may vary due to environment, heat dissipation and other factors.

WELL-THOUGHT-OUT SET OF ACCESSORIES



- 1. Flashlight
- 2. 18650 Li-Ion battery 3500 mAh
- 3. Magnetic USB charger

- 4. Nylon holster
- 5. Steel clip

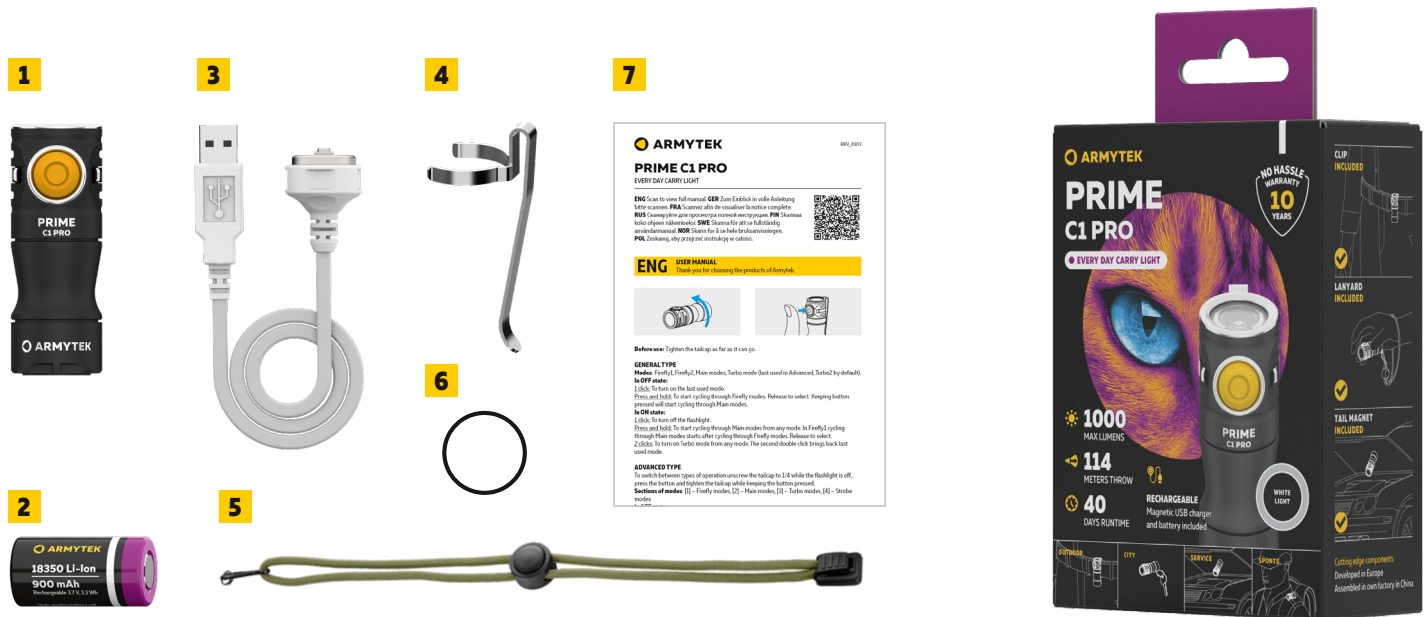
- 6. 2 spare O-rings
- 7. User manual in eight languages

SPECIFICATIONS

	Prime C2 Pro																								
Optics	TIR																								
Light output	2400 lm																								
Beam distance	123 m																								
Hotspot : Spill	70°:120°																								
Brightness stabilization type	Full																								
Number of modes	6 simple operation by default / 12 advanced operation																								
Modes / Runtimes	<table border="0"> <tr> <td>Turbo3</td> <td>2400 lm / 2 h 48 min (610 lm after 30 sec)</td> </tr> <tr> <td>Turbo2</td> <td>1710 lm / 2 h 48 min (610 lm after 1 min 30 sec)</td> </tr> <tr> <td>Turbo1</td> <td>815 lm / 2 h 44 min (610 lm after 22 min)</td> </tr> <tr> <td>Main3</td> <td>350 lm / 5 h 20 min</td> </tr> <tr> <td>Main2</td> <td>150 lm / 12 h 30 min</td> </tr> <tr> <td>Main1</td> <td>40 lm / 40 h 30 min</td> </tr> <tr> <td>Firefly3</td> <td>5 lm / 12 days</td> </tr> <tr> <td>Firefly2</td> <td>1 lm / 40 days</td> </tr> <tr> <td>Firefly1</td> <td>0.15 lm / 200 days</td> </tr> <tr> <td>Strobe3</td> <td>2400 lm / 10 Hz / 5 h 45 min (610 lm after 2 min)</td> </tr> <tr> <td>Strobe2</td> <td>2400 lm / 1 Hz / 12 h (610 lm after 10 min)</td> </tr> <tr> <td>Strobe1</td> <td>150 lm / 1 Hz / 55 h</td> </tr> </table>	Turbo3	2400 lm / 2 h 48 min (610 lm after 30 sec)	Turbo2	1710 lm / 2 h 48 min (610 lm after 1 min 30 sec)	Turbo1	815 lm / 2 h 44 min (610 lm after 22 min)	Main3	350 lm / 5 h 20 min	Main2	150 lm / 12 h 30 min	Main1	40 lm / 40 h 30 min	Firefly3	5 lm / 12 days	Firefly2	1 lm / 40 days	Firefly1	0.15 lm / 200 days	Strobe3	2400 lm / 10 Hz / 5 h 45 min (610 lm after 2 min)	Strobe2	2400 lm / 1 Hz / 12 h (610 lm after 10 min)	Strobe1	150 lm / 1 Hz / 55 h
Turbo3	2400 lm / 2 h 48 min (610 lm after 30 sec)																								
Turbo2	1710 lm / 2 h 48 min (610 lm after 1 min 30 sec)																								
Turbo1	815 lm / 2 h 44 min (610 lm after 22 min)																								
Main3	350 lm / 5 h 20 min																								
Main2	150 lm / 12 h 30 min																								
Main1	40 lm / 40 h 30 min																								
Firefly3	5 lm / 12 days																								
Firefly2	1 lm / 40 days																								
Firefly1	0.15 lm / 200 days																								
Strobe3	2400 lm / 10 Hz / 5 h 45 min (610 lm after 2 min)																								
Strobe2	2400 lm / 1 Hz / 12 h (610 lm after 10 min)																								
Strobe1	150 lm / 1 Hz / 55 h																								
Power source	1x18650 Li-Ion																								
Length / head diameter / body diameter	117.7 mm / 25.4 mm / 20.5 mm																								
Weight without / with battery	68 g / 118 g																								
Ingress protection, Submersion and Impact resistance	IP68. Depth up to 10 m for 5 h. Height up to 10 m																								
Set description	Flashlight, 18650 Li-Ion battery 3500mAh, magnetic USB charger, clip, holster, 2 spare O-rings, user manual																								

▶ All the above specifications are test results based on ANSI/PLATO FL 1-2019 Standard using the battery in the set. The data may vary due to environment, heat dissipation and other factors.

WELL-THOUGHT-OUT SET OF ACCESSORIES



- 1. Flashlight
- 2. 18350 Li-Ion battery 900 mAh
- 3. Magnetic USB charger
- 4. Steel clip
- 5. Wrist lanyard
- 6. Spare O-ring
- 7. User manual in eight languages

SPECIFICATIONS

		Prime C1 Pro
Optics		TIR
Light output		1000 lm
Beam distance		114 m
Hotspot : Spill		25°-120°
Brightness stabilization type		Digital
Number of modes		6 simple operation by default / 11 advanced operation
Modes / Runtimes	Turbo2	1000 lm / 1 h 25 min (350 lm after 2 min 20 sec)
	Turbo1	350 lm / 1 h 35 min
	Main3	210 lm / 2 h 35 min
	Main2	100 lm / 6 h 30 min
	Main1	40 lm / 15 h
	Firefly3	8 lm / 2.2 d
	Firefly2	2.5 lm / 5 d
	Firefly1	0.15 lm / 40 d
	Strobe3	1000 lm / 10 Hz / 2 h 20 min
	Strobe2	1000 lm / 1 Hz / 3 h 35 min
	Strobe1	100 lm / 1 Hz / 29 h
Power source		1x18350 Li-Ion
Length / head diameter / body diameter		67 mm / 24.5 mm / 24.5 mm
Weight without / with battery		47 g / 72 g
Ingress protection, Submersion and Impact resistance		IP68. Depth up to 10 m for 5 h. Height up to 10 m
Set description		Flashlight, 18350 Li-Ion battery 900 mAh, magnetic USB charger, steel clip, wrist lanyard, spare O-ring, user manual in eight languages

▶ All the above specifications are test results based on ANSI/PLATO FL 1-2019 Standard using the battery in the set. The data may vary due to environment, heat dissipation and other factors.

WELL-THOUGHT-OUT SET OF ACCESSORIES



- 1. Flashlight
- 2. 18650 Li-Ion battery 3200 mAh
- 3. Magnetic USB charger
- 4. Nylon holster
- 5. Steel clip
- 6. 2 spare O-rings
- 7. User manual in eight languages

SPECIFICATIONS

	Prime C2
Optics	TIR
Light output	1000 lm
Beam distance	114 m
Hotspot : Spill	25°:120°
Brightness stabilization type	Digital
Number of modes	6
Modes / Runtimes	Turbo 1000 lm / 4 h (420 lm after 2 min) Main3 360 lm / 4 h 20 min Main2 170 lm / 10 h Main1 40 lm / 47 h Firefly2 2.5 lm / 18 d Firefly1 0.15 lm / 140 d
Power source	1x18650 Li-Ion
Length / head diameter / body diameter	104 mm / 24.5 mm / 20.5 mm
Weight without / with battery	55 g / 105 g
Ingress protection, Submersion and Impact resistance	IP68. Depth up to 10 m for 5 h. Height up to 10 m
Set description	Flashlight, 18650 Li-Ion battery 3200 mAh, magnetic USB charger, nylon holster, steel clip, 2 spare O-rings, user manual in eight languages

► All the above specifications are test results based on ANSI/PLATO FL 1-2019 Standard using the battery in the set. The data may vary due to environment, heat dissipation and other factors.

WELL-THOUGHT-OUT SET OF ACCESSORIES



- 1. Flashlight
- 2. 18650 Li-Ion battery 3200 mAh
- 3. Magnetic USB charger
- 4. Steel clip
- 5. Wrist lanyard
- 6. Nylon holster
- 7. 2 spare O-rings
- 8. User manual in eight languages

SPECIFICATIONS

		Partner C2
Optics		Smooth reflector
Light output		1100 lm
Beam distance		240 m
Hotspot : Spill		7°:68°
Brightness stabilization type		Digital
Number of modes		5
Modes / Runtimes	Turbo	1100 lm / 2 h 10 min (500 lm after 2 min)
	Main3	350 lm / 3 h 30 min
	Main2	150 lm / 9 h 25 min
	Main1	50 lm / 28 h
	Strobe	1100 lm / 15 Hz / 3 h 45 min (500 lm after 20 min)
Power source		1x18650 Li-Ion
Length / head diameter / body diameter		104 mm / 24.5 mm / 20.5 mm
Weight without / with battery		55 g / 105 g
Ingress protection, Submersion and Impact resistance		IP68. Depth up to 10 m for 5 h. Height up to 10 m
Set description		Flashlight, 18650 Li-Ion battery 3200 mAh, magnetic USB charger, steel clip, wrist lanyard, nylon holster, 2 spare O-rings, user manual in eight languages

▶ All the above specifications are test results based on ANSI/PLATO FL 1-2019 Standard using the battery in the set. The data may vary due to environment, heat dissipation and other factors.

WELL-THOUGHT-OUT SET OF ACCESSORIES



- 1. Flashlight
- 2. 21700 Li-Ion battery 5000 mAh
- 3. Magnetic USB charger
- 4. 18650 battery adapter
- 5. Wrist lanyard
- 6. Nylon holster
- 7. Silicone cone
- 8. 2 spare O-rings
- 9. User manual in eight languages

SPECIFICATIONS

		Bear WRG		
Optics		TIR		
		White light	Red light	Green light
Light output		1500 lm	130 lm	180 lm
Beam distance		510 m	70 m	70 m
Hotspot : Spill		15°:58°	19°:56°	19°:56°
Brightness stabilization type		Digital		
Number of modes		5	5	5
Modes / Runtimes	Main3	1500 lm / 2 h 30 min (600 lm after 6 min)	130 lm / 5 h 30 min	180 lm / 5 h 30 min
	Main2	350 lm / 5 h 30 min	70 lm / 10 h 30 min	120 lm / 10 h
	Main1	50 lm / 30 h	35 lm / 24 h	70 lm / 23 h
	Firefly	0.5 lm / 30 d	0.5 lm / 30 d	1 lm / 30 d
	Beacon	1500 lm / 1 Hz / 2 h 45 min (1050 lm after 10 min)	130 lm / 1 Hz / 10 h	180 lm / 1 Hz / 10 h
Power source (built-in)		1x21700 Li-Ion, 1x18650 Li-Ion		
Length / width / height (without clip)		122 mm / 23.6 mm / 45 mm		
Weight		135 g / 205 g		
Ingress protection, Submersion and Impact resistance		IP68. Depth up to 10 m for 5 h. Height up to 10 m		
Set description		Flashlight, 21700 Li-Ion battery 5000 mAh, magnetic USB charger, 18650 battery adapter, wrist lanyard, nylon holster, silicone cone, 2 spare O-rings, user manual in eight languages		

► All the above specifications are test results based on ANSI/PLATO FL 1-2019 Standard using the battery in the set. The data may vary due to environment, heat dissipation and other factors.

WELL-THOUGHT-OUT SET OF ACCESSORIES



- 1. Flashlight
- 2. 21700 Li-Ion battery 5000 mAh
- 3. Magnetic USB charger
- 4. 18650 battery adapter
- 5. Headmount
- 6. Steel clip
- 7. Nylon holster
- 8. 2 spare O-rings
- 9. User manual in eight languages

SPECIFICATIONS

		Wizard C2 Pro Max LR
Optics		Smooth reflector
Light output		4150 lm
Beam distance		181 m
Hotspot : Spill		35°-85°
Brightness stabilization type		Full
Number of modes		6 simple operation by default / 10 advanced operation
Modes / Runtimes	Turbo2	4150 lm / 3 h 15 min (900 lm after 50 sec)
	Turbo1	1300 lm / 3 h 20 min (900 lm after 12 min)
	Main3	450 lm / 7 h
	Main2	150 lm / 21 h
	Main1	45 lm / 64 h
	Firefly2	7 lm / 10 d
	Firefly1	0.6 lm / 62 d
	Strobe3	4150 lm / 10 Hz / 6 h 50 min (900 lm after 2 min)
	Strobe2	4150 lm / 1 Hz / 14 h (900 lm after 10 min)
	Strobe1	150 lm / 1 Hz / 90 h
Power source		1x21700 Li-Ion, 1x18650 Li-Ion
Length / head diameter / body diameter		121.5 mm / 34.4 mm / 23.6 mm
Weight without / with battery		81 g / 151 g
Ingress protection, Submersion and Impact resistance		IP68. Depth up to 10 m for 5 h. Height up to 10 m
Set description		Flashlight, 21700 Li-Ion battery 5000 mAh, magnetic USB charger, 18650 battery adapter, headmount, steel clip, nylon holster, 2 spare O-rings, user manual in eight languages

► All the above specifications are test results based on ANSI/PLATO FL 1-2019 Standard using the battery in the set. The data may vary due to environment, heat dissipation and other factors.

WELL-THOUGHT-OUT SET OF ACCESSORIES



- 1. Flashlight
- 2. 21700 Li-Ion battery 5000 mAh
- 3. Magnetic USB charger
- 4. 18650 battery adapter
- 5. Headmount
- 6. Steel clip
- 7. 2 spare O-rings
- 8. User manual in eight languages

SPECIFICATIONS

		Wizard C2 Pro Max
Optics		TIR
Light output		4000 lm
Beam distance		114 m
Hotspot : Spill		110°:150°
Brightness stabilization type		Full
Number of modes		6 simple operation by default / 10 advanced operation
Modes / Runtimes	Turbo2 Turbo1 Main3 Main2 Main1 Firefly2 Firefly1 Strobe3 Strobe2 Strobe1	4000 lm / 3 h 15 min (900 lm after 50 sec) 1300 lm / 3 h 20 min (900 lm after 12 min) 450 lm / 7 h 150 lm / 21 h 45 lm / 64 h 7 lm / 10 days 0.6 lm / 62 days 4000 lm / 10 Hz / 6 h 50 min (900 lm after 2 min) 4000 lm / 1 Hz / 14 h (900 lm after 10 min) 150 lm / 1 Hz / 90 h
Power source		1x21700 Li-Ion, 1x18650 Li-Ion
Length / head diameter / body diameter		121.5 mm / 34.4 mm / 23.6 mm
Weight without / with battery		79 g / 149 g
Ingress protection, Submersion and Impact resistance		IP68. Depth up to 10 m for 5 h. Height up to 10 m
Set description		Flashlight, 21700 Li-Ion battery 5000 mAh, 18650 battery adapter, magnetic USB charger, headmount, clip, 2 spare O-rings, user manual

► All the above specifications are test results based on ANSI/PLATO FL 1-2019 Standard using the battery in the set. The data may vary due to environment, heat dissipation and other factors.

WELL-THOUGHT-OUT SET OF ACCESSORIES



- 1. Flashlight
- 2. 18650 Li-Ion battery 3500 mAh
- 3. Magnetic USB charger
- 4. Headmount
- 5. Steel clip
- 6. 2 spare O-rings
- 7. User manual in eight languages

SPECIFICATIONS

	Wizard C2 Pro																								
Optics	TIR																								
Light output	2500 lm																								
Beam distance	131 m																								
Hotspot : Spill	70°:120°																								
Brightness stabilization type	Full																								
Number of modes	6 simple operation by default / 12 advanced operation																								
Modes / Runtimes	<table style="width: 100%; border-collapse: collapse;"> <tr> <td style="width: 20%;">Turbo3</td> <td>2500 lm / 2 h 40 min (650 lm after 30 sec)</td> </tr> <tr> <td>Turbo2</td> <td>1750 lm / 2 h 45 min (650 lm after 2 min)</td> </tr> <tr> <td>Turbo1</td> <td>870 lm / 2 h 50 min (650 lm after 9 min)</td> </tr> <tr> <td>Main3</td> <td>370 lm / 5 h 15 min</td> </tr> <tr> <td>Main2</td> <td>160 lm / 12 h 15 min</td> </tr> <tr> <td>Main1</td> <td>45 lm / 43 h</td> </tr> <tr> <td>Firefly3</td> <td>6 lm / 12 days</td> </tr> <tr> <td>Firefly2</td> <td>1.5 lm / 40 days</td> </tr> <tr> <td>Firefly1</td> <td>0.15 lm / 200 days</td> </tr> <tr> <td>Strobe3</td> <td>2500 lm / 10 Hz / 5 h 45 min (650 lm after 100 sec)</td> </tr> <tr> <td>Strobe2</td> <td>2500 lm / 1 Hz / 12 h (650 lm after 9 min)</td> </tr> <tr> <td>Strobe1</td> <td>160 lm / 1 Hz / 55 h</td> </tr> </table>	Turbo3	2500 lm / 2 h 40 min (650 lm after 30 sec)	Turbo2	1750 lm / 2 h 45 min (650 lm after 2 min)	Turbo1	870 lm / 2 h 50 min (650 lm after 9 min)	Main3	370 lm / 5 h 15 min	Main2	160 lm / 12 h 15 min	Main1	45 lm / 43 h	Firefly3	6 lm / 12 days	Firefly2	1.5 lm / 40 days	Firefly1	0.15 lm / 200 days	Strobe3	2500 lm / 10 Hz / 5 h 45 min (650 lm after 100 sec)	Strobe2	2500 lm / 1 Hz / 12 h (650 lm after 9 min)	Strobe1	160 lm / 1 Hz / 55 h
Turbo3	2500 lm / 2 h 40 min (650 lm after 30 sec)																								
Turbo2	1750 lm / 2 h 45 min (650 lm after 2 min)																								
Turbo1	870 lm / 2 h 50 min (650 lm after 9 min)																								
Main3	370 lm / 5 h 15 min																								
Main2	160 lm / 12 h 15 min																								
Main1	45 lm / 43 h																								
Firefly3	6 lm / 12 days																								
Firefly2	1.5 lm / 40 days																								
Firefly1	0.15 lm / 200 days																								
Strobe3	2500 lm / 10 Hz / 5 h 45 min (650 lm after 100 sec)																								
Strobe2	2500 lm / 1 Hz / 12 h (650 lm after 9 min)																								
Strobe1	160 lm / 1 Hz / 55 h																								
Power source	1x18650 Li-Ion																								
Length / head diameter / body diameter	112 mm / 33 mm / 20.4 mm																								
Weight without / with battery	65 g / 115 g																								
Ingress protection, Submersion and Impact resistance	IP68. Depth up to 10 m for 5 h. Height up to 10 m																								
Set description	Flashlight, 18650 Li-Ion battery 3500mAh, magnetic USB charger, headmount, clip, 2 spare O-rings, user manual																								

▶ All the above specifications are test results based on ANSI/PLATO FL 1-2019 Standard using the battery in the set. The data may vary due to environment, heat dissipation and other factors.

WELL-THOUGHT-OUT SET OF ACCESSORIES



- 1. Flashlight
- 2. 18650 Li-Ion battery 3500 mAh
- 3. Magnetic USB charger
- 4. Headmount
- 5. Steel clip
- 6. 2 spare O-rings
- 7. User manual in eight languages

SPECIFICATIONS

		Wizard C2 Pro Nichia
Optics		TIR
Light output		1600 lm
Beam distance		113 m
Hotspot : Spill		70°:120°
Brightness stabilization type		Full
Number of modes		6 simple operation by default / 11 advanced operation
Modes / Runtimes	Turbo2 Turbo1 Main3 Main2 Main1 Firefly3 Firefly2 Firefly1 Strobe3 Strobe2 Strobe1	1600 lm / 2 h 55 min (440 lm after 1 min) 750 lm / 3 h (440 lm after 5 min) 250 lm / 6 h 40 min 90 lm / 16 h 34 lm / 43 h 4.6 lm / 12 days 1 lm / 40 days 0.1 lm / 200 days 1600 lm / 10 Hz / 6 h 20 min (440 lm after 2 min) 1600 lm / 1 Hz / 13 h (440 lm after 8 min) 90 lm / 1 Hz / 71 h
Power source		1x18650 Li-Ion
Length / head diameter / body diameter		112 mm / 33 mm / 20.4 mm
Weight without / with battery		65 g / 115 g
Ingress protection, Submersion and Impact resistance		IP68. Depth up to 10 m for 5 h. Height up to 10 m
Set description		Flashlight, 18650 Li-Ion battery 3500 mAh, magnetic USB charger, headmount, clip, 2 spare O-rings, user manual

► All the above specifications are test results based on ANSI/PLATO FL 1-2019 Standard using the battery in the set. The data may vary due to environment, heat dissipation and other factors.

WELL-THOUGHT-OUT SET OF ACCESSORIES



- 1. Flashlight
- 2. 18650 Li-Ion battery 3200 mAh
- 3. Magnetic USB charger
- 4. Headmount
- 5. Steel clip
- 6. 2 spare O-rings
- 7. User manual in eight languages

SPECIFICATIONS

		Wizard C2
Optics		TIR
Light output		1200 lm
Beam distance		108 m
Hotspot : Spill		70°:120°
Brightness stabilization type		Digital
Number of modes		6
Modes / Runtimes	Turbo	1200 lm / 2 h 45 min (580 lm after 4 min)
	Main3	390 lm / 4 h 45 min
	Main2	180 lm / 11 h
	Main1	40 lm / 51 h
	Firefly2	2 lm / 26 days
	Firefly1	0.11 lm / 200 days
Power source		1x18650 Li-Ion
Length / head diameter / body diameter		112 mm / 33 mm / 20.4 mm
Weight without / with battery		64 g / 114 g
Ingress protection, Submersion and Impact resistance		IP68. Depth up to 10 m for 5 h. Height up to 10 m
Set description		Flashlight, 18650 Li-Ion battery 3200 mAh, magnetic USB charger, headmount, clip, 2 spare O-rings, user manual

▶ All the above specifications are test results based on ANSI/PLATO FL 1-2019 Standard using the battery in the set. The data may vary due to environment, heat dissipation and other factors.

WELL-THOUGHT-OUT SET OF ACCESSORIES



- 1. Flashlight
- 2. 18650 Li-Ion battery 3200 mAh
- 3. Magnetic USB charger
- 4. Headmount
- 5. Steel clip
- 6. 2 spare O-rings
- 7. User manual in eight languages

SPECIFICATIONS

		Wizard C2 WR	
Optics		TIR	
		White light	Red light
Light output		1100 lm	230 lm
Beam distance		98 m	41 m
Hotspot : Spill		70°:120°	
Brightness stabilization type		Full	
Number of modes		5 white light + 5 red light	
Modes / Runtimes	Turbo	1100 lm / 2 h 30 min (520 lm after 90 sec)	230 lm / 3 h (160 lm after 7 min)
	Main2	410 lm / 4 h	72 lm / 13 h
	Main1	130 lm / 13 h	18 lm / 46 h
	Firefly	0.6 lm / 65 days	0.1 lm / 65 days
	Strobe	410 lm / 1 Hz / 17 h	230 lm / 1 Hz / 9 h 20 min
Power source		1x18650 Li-Ion	
Length / head diameter / body diameter		112 mm / 33 mm / 20.4 mm	
Weight without / with battery		65 g / 115 g	
Ingress protection, Submersion and Impact resistance		IP68. Depth up to 10 m for 5 h. Height up to 10 m	
Set description		Flashlight, 18650 Li-Ion battery 3200 mAh, magnetic USB charger, headmount, clip, 2 spare O-rings, user manual	

► All the above specifications are test results based on ANSI/PLATO FL 1-2019 Standard using the battery in the set. The data may vary due to environment, heat dissipation and other factors.

WELL-THOUGHT-OUT SET OF ACCESSORIES



- 1. Flashlight
- 2. 18650 Li-Ion battery 3200 mAh
- 3. Magnetic USB charger
- 4. Headmount
- 5. Steel clip
- 6. 2 spare O-rings
- 7. User manual in eight languages

SPECIFICATIONS

		Wizard C2 WUV	
Optics		TIR	
		White light	Ultraviolet light
Light output		1100 lm	1595 mW
Beam distance		98 m	-
Hotspot : Spill		70°:120°	
Brightness stabilization type		Full	
Number of modes		5 white light + 5 ultraviolet light	
Modes / Runtimes	Turbo	1100 lm / 2 h 30 min (520 lm after 90 sec)	1595 mW / 3 h
	Main2	410 lm / 4 h	491 mW / 7 h 30 min
	Main1	130 lm / 13 h	120 mW / 32 h
	Firefly	0.6 lm / 65 days	1 mW / 9 days
	Strobe	410 lm / 1 Hz / 17 h	1595 mW / 1 Hz / 15 h
Power source		1x18650 Li-Ion	
Length / head diameter / body diameter		112 mm / 33 mm / 20.4 mm	
Weight without / with battery		65 g / 115 g	
Ingress protection, Submersion and Impact resistance		IP68. Depth up to 10 m for 5 h. Height up to 10 m	
Set description		Flashlight, 18650 Li-Ion battery 3200 mAh, magnetic USB charger, headmount, clip, 2 spare O-rings, user manual	

► All the above specifications are test results based on ANSI/PLATO FL 1-2019 Standard using the battery in the set. The data may vary due to environment, heat dissipation and other factors.

WELL-THOUGHT-OUT SET OF ACCESSORIES



- 1. Flashlight
- 2. 18350 Li-Ion battery 900 mAh
- 3. Magnetic USB charger
- 4. Headmount
- 5. Steel clip
- 6. Spare O-ring
- 7. User manual in eight languages

SPECIFICATIONS

		Wizard C1 Pro
Optics		TIR
Light output		1000 lm
Beam distance		100 m
Hotspot : Spill		70°:120°
Brightness stabilization type		Digital
Number of modes		6 simple operation by default / 11 advanced operation
Modes / Runtimes	Turbo2	1000 lm / 55 min (500 lm after 5 min)
	Turbo1	440 lm / 1 h 24 min
	Main3	210 lm / 3 h
	Main2	100 lm / 6 h 40 min
	Main1	40 lm / 16 h 30 min
	Firefly3	7 lm / 2.5 days
	Firefly2	2 lm / 8 days
	Firefly1	0.11 lm / 60 days
	Strobe3	1000 lm / 10 Hz / 1 h
	Strobe2	1000 lm / 1 Hz / 2 h 20 min
	Strobe1	100 lm / 1 Hz / 32 h
Power source		1x18350 Li-Ion
Length / head diameter / body diameter		77 mm / 33 mm / 20.4 mm
Weight without / with battery		54 g / 79 g
Ingress protection, Submersion and Impact resistance		IP68. Depth up to 10 m for 5 h. Height up to 10 m
Set description		Flashlight, 18350 Li-Ion battery 900 mAh, magnetic USB charger, headmount, clip, spare O-ring, user manual

► All the above specifications are test results based on ANSI/PLATO FL 1-2019 Standard using the battery in the set. The data may vary due to environment, heat dissipation and other factors.

WELL-THOUGHT-OUT SET OF ACCESSORIES



- 1. Flashlight
- 2. 18650 Li-Ion battery 3200 mAh
- 3. USB-C cable
- 4. Headmount
- 5. Steel clip
- 6. 2 spare O-rings
- 7. User manual in eight languages

SPECIFICATIONS

		Elf C2
Optics		TIR
Light output		1100 lm
Beam distance		105 m
Hotspot : Spill		70°:120°
Brightness stabilization type		Digital
Number of modes		6
Modes / Runtimes		Turbo 1100 lm / 2 h 32 min (650 lm after 4 min) Main3 500 lm / 3 h 45 min Main2 220 lm / 10 h Main1 43 lm / 38 h Firefly2 2 lm / 26 d Firefly1 0.11 lm / 200 d
Power source		1x18650 Li-Ion
Length / head diameter / body diameter		111.3 mm / 33 mm / 20.4 mm
Weight without / with battery		65 g / 115 g
Ingress protection, Submersion and Impact resistance		IP68. Depth up to 10 m for 5 h. Height up to 10 m
Set description		Flashlight, 18650 Li-Ion battery 3200 mAh, Micro USB cable, headmount, clip, 2 spare O-rings, user manual

▶ All the above specifications are test results based on ANSI/PLATO FL 1-2019 Standard using the battery in the set. The data may vary due to environment, heat dissipation and other factors.

WELL-THOUGHT-OUT SET OF ACCESSORIES



- 1. Flashlight
- 2. 18350 Li-Ion battery 900 mAh
- 3. USB-C cable
- 4. Headmount
- 5. Steel clip
- 6. Spare O-ring
- 7. User manual in eight languages

SPECIFICATIONS

		Elf C1
Optics		TIR
Light output		1000 lm
Beam distance		103 m
Hotspot : Spill		70°:120°
Brightness stabilization type		Digital
Number of modes		6
Modes / Runtimes		Turbo 1000 lm / 52 min (530 lm after 4 min) Main3 500 lm / 1 h 11 min Main2 220 lm / 3 h Main1 43 lm / 11 h Firefly2 2 lm / 8 d Firefly1 0.11 lm / 60 d
Power source		1x18350 Li-Ion
Length / head diameter / body diameter		76 mm / 33 mm / 20.4 mm
Weight without / with battery		55 g / 80 g
Ingress protection, Submersion and Impact resistance		IP68. Depth up to 10 m for 5 h. Height up to 10 m
Set description		Flashlight, 18350 Li-Ion battery 900 mAh, Micro USB cable, headmount, clip, spare O-ring, user manual

▶ All the above specifications are test results based on ANSI/PLATO FL 1-2019 Standard using the battery in the set. The data may vary due to environment, heat dissipation and other factors.

WHAT'S INCLUDED



1. Flashlight

2. Steel clip

3. User manual in eight languages

SPECIFICATIONS

		Zippy
Light output		160 lm
Beam distance		15 m
Hotspot : Spill		60°:110°
Brightness stabilization type		Digital
Number of modes		3
Modes / Runtimes	High	160 lm / 17 min
	Mid	50 lm / 1 h
	Low	5 lm / 10 h
Power source (built-in)		Li-Pol 100 mAh
Length / width / height (without clip)		59 mm / 25 mm / 9 mm
Weight		12 g
Ingress protection, Submersion and Impact resistance		IP67. Depth up to 1 m for 30 min. Height up to 10 m
Set description		Flashlight, clip, user manual

► All the above specifications are test results based on ANSI/PLATO FL 1-2019 Standard. The data may vary due to environment, heat dissipation and other factors.

WHAT'S INCLUDED



- 1. Flashlight
- 2. Steel clip
- 3. Plastic holder with two magnets
- 4. Headband
- 5. User manual in eight languages

SPECIFICATIONS

		Zippy ES
Light output		160 lm
Beam distance		15 m
Hotspot : Spill		60°:110°
Brightness stabilization type		Digital
Number of modes		3
Modes / Runtimes	High	160 lm / 17 min
	Mid	50 lm / 1 h
	Low	5 lm / 10 h
Power source (built-in)		Li-Pol 100 mAh
Length / width / height (without clip)		59 mm / 25 mm / 9 mm
Weight		12 g
Ingress protection, Submersion and Impact resistance		IP67. Depth up to 1 m for 30 min. Height up to 10 m
Set description		Flashlight, clip, plastic holder with two magnets, headband, user manual

► All the above specifications are test results based on ANSI/PLATO FL 1-2019 Standard. The data may vary due to environment, heat dissipation and other factors.

WHAT'S INCLUDED



- 1. Flashlight
- 2. Steel clip
- 3. Plastic holder with two magnets
- 4. Headband
- 5. User manual in eight languages

SPECIFICATIONS

		Zippy ES WR	
		White light	Red light
Light output		120 lm	30 lm
Beam distance		12 m	6 m
Hotspot : Spill		60° : 110°	
Brightness stabilization type		Digital	
Number of modes		5 white light + 5 red light	
Modes / Runtimes	Main3	120 lm / 19 min	30 lm / 34 min
	Main2	30 lm / 1 h 20 min	10 lm / 2 h 10 min
	Main1	4 lm / 10 h	2 lm / 10 h
	Firefly	0.1 lm / 220 h	0.1 lm / 135 h
	Beacon	120 lm / 1 Hz / 2 h	30 lm / 1 Hz / 3 h 10 min
Power source (built-in)		Li-Pol 100 mAh	
Length / width / height (without clip)		59 mm / 25 mm / 9 mm	
Weight		12 g	
Ingress protection, Submersion and Impact resistance		IP67. Depth up to 1 m for 30 min. Height up to 10 m	
Set description		Flashlight, clip, plastic holder with two magnets, headband, user manual	

► All the above specifications are test results based on ANSI/PLATO FL 1-2019 Standard. The data may vary due to environment, heat dissipation and other factors.

WHAT'S INCLUDED



1. Flashlight
2. Headband

3. Bicycle mount
4. Velcro mounting tape

5. Lanyard
6. User manual in eight languages

SPECIFICATIONS

		Crystal Pro	
		White light	Red light
Light output		220 lm	30 lm (43 lm in Brake light mode)
Beam distance		14 m	5 m
Hotspot : Spill		70° : 140°	
Brightness stabilization type		Digital	
Number of modes		6	7
Modes / Runtimes	Main3	220 lm / 2 h 20 min (180 lm after 4 min)	30 lm / 3 h
	Main2	45 lm / 8 h 10 min	12 lm / 9 h 15 min
	Main1	7 lm / 54 h	2 lm / 54 h
	Firefly	0.1 lm / 50 d	0.1 lm / 30 d
	Beacon2	220 lm / 1 Hz / 8 h 30 min	30 lm / 1 Hz / 13 h 30 min
	Beacon1	45 lm / 1 Hz / 32 h	12 lm / 1 Hz / 38 h
	Brake light		43 lm
Power source (built-in)		Li-Pol 600 mAh	
Length / width / height (without clip)		63 mm / 42.6 mm / 15 mm	
Weight		34 g	
Ingress protection, Submersion and Impact resistance		IP67. Depth up to 1 m for 30 min. Height up to 10 m	
Set description		Flashlight, headband, bicycle mount, Velcro mounting tape, lanyard, user manual in eight languages	

► All the above specifications are test results based on ANSI/PLATO FL 1-2019 Standard using the battery in the set. The data may vary due to environment, heat dissipation and other factors.

WHAT'S INCLUDED



- 1.** Flashlight
- 2.** Headband
- 3.** Lanyard
- 4.** Two silicone installation rings
- 5.** Clip pad
- 6.** Velcro mounting tape
- 7.** User manual in eight languages

SPECIFICATIONS

		Crystal			
		White light	Red light	Green light	Blue light
Light output		200 lm	30 lm	70 lm	25 lm
Beam distance		14 m	6 m	9 m	3 m
Hotspot : Spill		70° : 140°			
Brightness stabilization type		Digital			
Number of modes		5	4	4	4
Modes / Runtimes	Main3	200 lm / 1 h 25 min	30 lm / 2 h 30 min	70 lm / 2 h 8 min	25 lm / 3 h
	Main2	45 lm / 5 h 30 min	12 lm / 5 h 30 min	30 lm / 7 h	11 lm / 6 h 10 min
	Main1	6 lm / 33 h	2 lm / 36 h	5 lm / 35 h	2 lm / 35 h
	Firefly	0.1 lm / 50 d	-	-	-
	Beacon	45 lm / 1 Hz / 35 h	12 lm / 1 Hz / 38 h	30 lm / 1 Hz / 39 h	11 lm / 1 Hz / 39 h
Power source (built-in)		Li-Pol 600 mAh			
Length / width / height (without clip)		63 mm / 42.6 mm / 15 mm			
Weight		34 g			
Ingress protection, Submersion and Impact resistance		IP67. Depth up to 1 m for 30 min. Height up to 10 m			
Set description		Flashlight, headband, Lanyard, two silicone installation rings, clip pad, Velcro mounting tape, user manual in eight languages			

► All the above specifications are test results based on ANSI/PLATO FL 1-2019 Standard using the battery in the set. The data may vary due to environment, heat dissipation and other factors.